

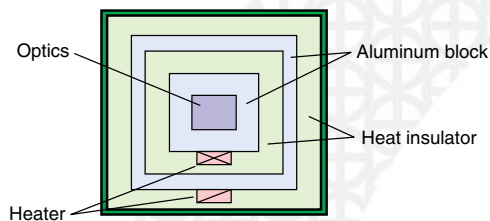
RID-10A

Refractive Index Detector for Shimadzu HPLC Systems



Short Warm-up Time

The double temperature controlled housing of the optical system dramatically improved warm-up time for detector stabilization. You no longer must wait several hours for baseline stability.



GLP/GMP Compliance

Daily checks and log-keeping can be automated.* The standard validation documents such as Certificate of Compliance and Hardware Validation SOP are provided to facilitate compliance with regulatory requirements.

*With optional System Check software

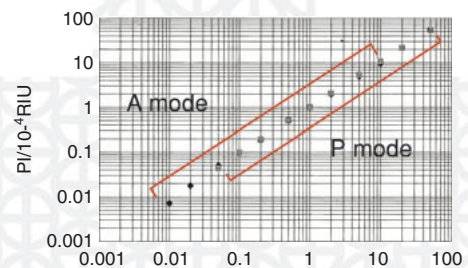
Enhanced Safety Features

A leak sensor is provided as a standard feature to guard against solvent leakage in the detector. An optional relief valve is also available to protect the flow cell and detector from accidental over-pressure conditions.

Broad application range - from Analytical to Preparative scale HPLC

Thanks to the patented, 4-partition detector design (US Patent No.5398,110), Shimadzu's RID-10A provides high sensitivity refractive index detection in 3 modes without compromising linearity. Whether you are performing Analytical, Semi-preparative, or preparative analyses, this unit will satisfy your needs. The 3 modes of operation are:

- A mode : Used in highly sensitive analytical HPLC
- P mode : Used in analytical HPLC and semi-preparative HPLC (~20 mL/min.)
- L mode : Used in large-scale preparative HPLC, using an optional flow selection block (~150 mL/min.)



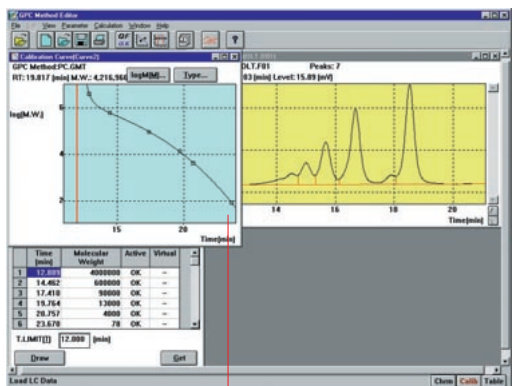
Standard "Plug-and-Play" simplicity

As with all of Shimadzu's LC-VP and Prominence modules, the RID-10A may be linked via unique fiber optic connections to the centralized System Controller (SCL-10AVP or CBM-20A). This facilitates the convenience of interfacing and operation.

Example of Shimadzu HPLC Systems with RID-10A

GPC System

This system measures polymer molecular weight with high accuracy. This system includes user-friendly calibration curve creation, super-imposed display of charts, and ASCII data conversion. The molecular weight calculations incorporate retention time correction by internal standard, delay time correction between detectors, and sensitivity correction of the refractive index detector.



Select virtual points and idle points by mouse operation.



Specifications: RID-10A (Cat. No. 228-35000-xx)

Refractive index range	1 - 1.75 RIU
Noise level	Less than 2.5×10^{-9} RIU
Drift	Less than 1×10^{-7} RIU / hour
Range	A mode 0.01 - 500×10^{-6} RIU P and L* modes 1 - 5000×10^{-6} RIU
Response	0.05 - 10 seconds, 10 step selection
Polarity selection	With a switch
Zero point adjustment	Auto, Auto optical, and Fine
Flow cell volume	9 μ L
Dimensions and weight	260 ^W x 420 ^D x 140 ^H mm, 12 kg
Ambient temperature	4 - 35°C
Power requirements	100, 120, 220, 230V AC as ordered. 150VA, 50 / 60 Hz

* Requires Flow Selection Block (Cat. No. 228-34102-91).



SHIMADZU CORPORATION. International Marketing Division
3, Kanda-Nishikicho 1-chome, Chiyoda-ku, Tokyo 101-8448, Japan Phone: 81(3)3219-5641 Fax: 81(3)3219-5710
Cable Add.: SHIMADZU TOKYO

SHIMADZU SCIENTIFIC INSTRUMENTS, INC.
7102 Riverwood Drive, Columbia, Maryland 21046, U.S.A.
Phone: 1(410)381-1227 Fax: 1(410)381-1222 Toll Free: 1(800)477-1227

SHIMADZU EUROPA GmbH
Albert-Hahn-Strasse 6-10, 47269 Duisburg, F.R. Germany Phone: 49(203)7687-0 Fax: 49(203)766625

SHIMADZU (ASIA PACIFIC) PTE LTD.
16 Science Park Drive #01-01 Singapore Science Park, Singapore 118227, Republic of Singapore
Phone: 65-6778-6280 Fax: 65-6779-2935

SHIMADZU SCIENTIFIC INSTRUMENTS (OCEANIA) PTY. LTD.
Units F, 10-16 South Street Rydalmere N.S.W. 2116, Australia
Phone: 61(2)9684-4200 Fax: 61(2)9684-4055

SHIMADZU DO BRASIL COMÉRCIO LTDA.
Avenida Marquês de São Vicente, 1771, Barra Funda CEP: 01139-003-São Paulo-SP, Brasil
Phone: (55)11-3611-1688 Fax: (55)11-3611-2209

SHIMADZU (HONG KONG) LIMITED
Suite 1028 Ocean Center, Harbour City, Tsim Sha Tsui, Kowloon HONG KONG
Phone: (852)2375-4979 Fax: (852)2199-7438

SHIMADZU INTERNATIONAL TRADING (SHANGHAI) Co., LTD. SHANGHAI OFFICE
24th Floor, Shanghai Xin Hualian Building, No.755 Huaihai Zhong Lu, Shanghai, China
Phone: 86-21-6472-8442 Fax: 86-21-6472-8648

Overseas Offices
Istanbul, Moscow

URL <http://www.shimadzu.com>



JQA-0376