

Company Overview

Shimadzu Scientific Instruments



Headquartered

in Columbia, Maryland,

Shimadzu Scientific Instruments (SSI) is the American subsidiary of Shimadzu Corporation (Kyoto, Japan). SSI was established in 1975 as a distribution center providing analytical solutions to a wide range of laboratories and lab services providers in the Americas. Today, SSI's focus has expanded greatly beyond distribution. SSI maintains a network of ten regional offices strategically located across the United States, with experienced technical specialists, service and sales engineers situated throughout the country; a state-of-the-art Customer Training and Education Center; and Shimadzu U.S.A. Manufacturing, which supplies HPLC, GC-MS/MS, LC-MS/MS, and other high-tech products to the U.S. market. In addition, SSI operates a Solution Center, designed to allow more collaborative research and enable more applications development, and an R&D Center that houses a team of engineers and scientists whose goal is to develop close collaborations with universities, government agencies, and industry centers.

Shimadzu's instruments are used by scientists throughout the Americas, and we count as customers some of the world's leading institutions as well as a long list of local, state, and federal government laboratories. In addition, SSI is a leader in the academic community with a robust grant program and a SPARQ (Shimadzu Partnership for Academics, Research, and Quality of Life) program designed to build long-term relationships between the company and colleges/universities

Shimadzu's growth throughout its history is a testament to experience, technological expertise and customer service/support. Moving forward, Shimadzu will continue to develop and manufacture instruments that deliver results faster and more efficiently than ever before to meet the needs of researchers, scientists, and manufacturers around the globe.

Shimadzu

Solution Center

The Shimadzu Solution Center enhances collaboration with customers and enables the company to more quickly respond to customer needs for new scientific instruments, software platforms, and applications. In addition to serving as a showcase for its instruments and platforms, the center provides space for more collaborative research, and enables SSI to quickly develop new software applications and focused-based solutions to better serve growing customer demands.

The center also features high-definition state-of-the-art video and conferencing equipment to facilitate customer interactions both within the center and in collaboration with manufacturing, software, and R&D groups.

Shimadzu

R&D Center

The SSI R&D Center, consisting of laboratories in Columbia, MD, Boston, and the San Francisco area, comprises three groups: the Strategic Collaboration Development Group, the Research and Development Group, and the Application Development Group. The goal of this team of engineers and scientists is to develop close collaborations with universities, government agencies and industry centers in order to capitalize on the cutting-edge research being conducted in and around the United States. The team will focus on customization of both hardware and software to meet local demands and engage in application development in such areas as food safety, clinical medicine, and the environment.



Customer Training and Education Center

Shimadzu Scientific Instrument's training has helped thousands of scientists advance their careers through a wide variety of instrument and application training courses. Guided by learning science, these courses are designed by our team of subject-matter experts and learning professionals to provide a tailored blend of information and practice. For our in-person courses, instruction is provided by highly trained specialists who are experts in their respective fields.

Product Service and Support

The goal of the Shimadzu product support staff is to ensure our customers' success with their instruments. Highly trained field service technicians are equipped to enable fast and efficient response to any situation. They are supported by experienced product engineers and applications specialists at the Shimadzu Technical Support Center in Columbia, MD.

Free technical support is available by contacting our Customer Service Center at 1-800-477-1227.

To learn more about Shimadzu products and services, visit our web site at www.ssi.shimadzu.com.

Consumables and accessories for Shimadzu instruments are available online at <https://store.shimadzu.com>.

www.ssi.shimadzu.com

TECHNO

CHROMATOGRAPHY

HPLC
UHPLC
Integrated LC
IC
Prep LC
SFE-SFC
LCxLC
GC
Multidimensional GC
GCxGC
System GC

MASS SPECTROMETRY

GC-MS
GC-MS/MS
ICP-MS
LC-MS
LC-MS/MS
MALDI-TOF
MALDI-DIT
MS Imaging

SAMPLE PREPARATION & PROTEIN SEQUENCING

INFORMATICS

Data Analysis
Integrated Data Management
Multi-vendor Control
LIMS Integration
Customized Solutions

MOLECULAR SPECTROSCOPY

UV-Vis-NIR
FTIR
Fluorescence
Raman



LOGIES

ATOMIC / X-RAY SPECTROSCOPY

Inductively Coupled Plasma Emission (ICPE)
Atomic Absorption (AA)
Energy Dispersive X-ray Fluorescence

TOTAL ORGANIC CARBON / SUM PARAMETERS

TOC Lab/On-Line
Total Nitrogen (TN)
Total Phosphorus (TP)

BALANCES

MATERIALS TESTING

Universal Test Machines
Fatigue Testing
Micro Hardness Testing
Capillary Flow Testing
Impact Testing
Non-Destructive Inspection
Thermal Analysis
Particle Size Analysis
Texture Analysis

CONSUMABLES

Columns
Chemicals
Sample Prep Devices
Vials, Syringes, etc.



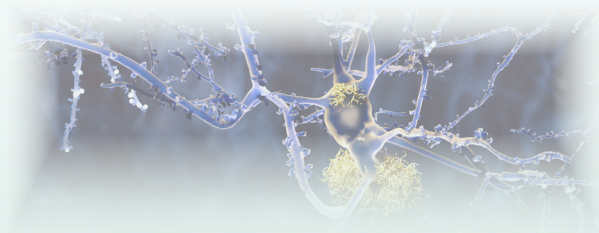
MARKETS AND



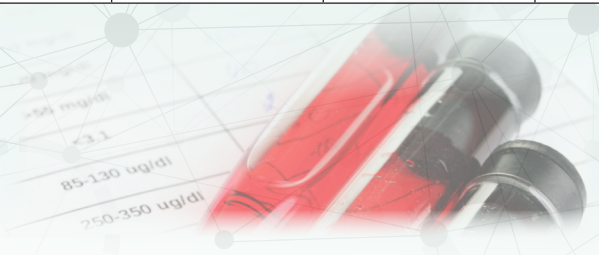
	Automotive	Cannabis/ Hemp	Chemicals	Clinical	Electronics
AA/ICP	•	•	•	•	•
Balances	•	•	•	•	•
EDXRF	•	•	•		•
Fatigue Testing	•	•			•
Fluorescence			•		
FTIR	•	•	•	•	•
GC	•	•	•	•	•
GC-MS	•	•	•	•	•
HPLC		•	•	•	
IC					
ICP-MS		•	•	•	•
LC-MS		•	•	•	
MALDI		•	•	•	
Particle Size	•	•			
Raman	•		•		•
Thermal	•	•		•	•
TOC / SUM Parameters		•	•	•	•
Universal Test Machines	•	•			•
UV	•	•	•	•	•



APPLICATIONS



Environmental	Forensics / Toxicology	Food & Beverages	Fuels & Energy	Life Science	Material Science	Pharma / Biopharma
•	•	•	•	•	•	•
•	•	•	•	•	•	•
•	•	•	•		•	•
		•	•		•	•
•		•		•	•	•
•	•	•	•	•	•	•
•	•	•	•		•	•
•	•	•	•	•	•	•
•	•	•	•	•		•
•		•	•			•
•	•	•	•	•	•	•
•	•	•	•	•	•	•
•	•	•	•	•	•	•
•		•	•	•	•	•
•	•	•	•	•	•	•
•	•	•		•	•	•
•	•	•	•	•		•
		•	•		•	•
•	•	•	•	•	•	•



U.S. Regional Offices

MID-ATLANTIC Region

Baltimore / Washington, DC
Toll Free: (800) 388-6996

NORTH ATLANTIC Region

New England Office
Toll Free: (800) 396-4943

NEW JERSEY Region

New Jersey Office
Toll Free: (800) 439-8555

SOUTHEAST Region

Raleigh/Durham Office
Toll Free: (800) 951-9167

FLORIDA Region

Tampa Office
Toll Free: (844) 260-0187

NORTH CENTRAL Region

Chicago Office
Toll Free: (800) 792-1992

SOUTH CENTRAL Region

Houston Office
Toll Free: (800) 739-1942

MID-WEST Region

Kansas City Office
Toll Free: (877) 698-7923

NORTHERN CALIFORNIA Region

San Francisco Office
Toll Free: (800) 482-0253

SOUTHERN CALIFORNIA Region

Carlsbad Office
Toll Free: (866) 862-1677



Shimadzu Corporation

www.shimadzu.com/an/

Shimadzu Scientific Instruments

7102 Riverwood Drive, Columbia, Maryland 21046, U.S.A.
Phone: 800-477-1227/410-381-1227, Fax: 410-381-1222

www.ssi.shimadzu.com

For Research Use Only. Not for use in diagnostic procedures.

This publication may contain references to products that are not available in your country. Please contact us to check the availability of these products in your country.

Company names, products/service names and logos used in this publication are trademarks and trade names of Shimadzu Corporation, its subsidiaries or its affiliates, whether or not they are used with trademark symbol "TM" or "®".

Third-party trademarks and trade names may be used in this publication to refer to either the entities or their products/services, whether or not they are used with trademark symbol "TM" or "®".

Shimadzu disclaims any proprietary interest in trademarks and trade names other than its own.

The contents of this publication are provided to you "as is" without warranty of any kind, and are subject to change without notice. Shimadzu does not assume any responsibility or liability for any damage, whether direct or indirect, relating to the use of this publication.