

# Accelerating Reliable Performance



Shimadzu ICPMS-2030 Inductively Coupled Plasma Mass Spectrometer

## Quantitation of Trace Elements in Blood Using Shimadzu ICPMS-2030 Inductively Coupled Plasma Mass Spectrometer

- ▶ A newly developed collision cell provides high sensitivity and low interference.
- ▶ A unique system developed by Shimadzu results in the industry's lowest running costs\*.

\*As of February 2016, based data obtained by Shimadzu

# Quantitation of Trace Elements in Blood Using the ICPMS-2030

The quantitation of toxic metals in biological samples such as blood and urine is necessary for assessing the exposure of humans and other animals to such metals through the natural environment, including consumption of metal-laden foods and drinks. An ICP-MS system is able to quickly measure trace quantities of toxic metals with high sensitivity. The quantitation of trace elements in blood performed with the ICPMS-2030 is shown in this report.

## Sample

Blood Sample: Seronorm Trace Elements Whole Blood L-1

## Sample Pretreatment and Measurement Procedures

About 50  $\mu\text{L}$  of sample was put in a 7 mL TFM insert. 0.5 mL of concentrated nitric acid was added to the TFM insert. Then the sample was decomposed using ETHOS-TC microwave oven digestion system (Milestone). After the decomposition, pure water was added to the TFM insert to make 5 mL of the sample solution. XSTC-622 (SPEX) and a 1000  $\mu\text{g/mL}$  mercury solution (Wako)

were diluted with 0.14 M nitric acid solution to make the standard samples for obtaining the calibration curves. The concentrations of As, Cd, Pb, Mn, Hg and Se in the sample solution were determined by the calibration curve method (internal standard method). The measurement results are shown in table 1 and are less than the analytical values. Figure 1 shows the calibration curves of As, Cd and Pb.



System Configuration		Measurement Conditions	
▶ ICPMS-2030		RF Power	1.2 kW
▶ AS-10 Autosampler		Plasma Gas Flow Rate	8.0 L/min
		Aux. Gas Flow Rate	1.10 L/min
		Carrier Gas Flow Rate	0.70 L/min
		Sample Introduction	Nebulizer 07
		Spray Chamber	Electronically-cooled cyclonic
		Torch	Shimadzu mini-torch
		Collision Gas	He

Table 1 Measurement Results for Trace Elements in Blood

Measured Element	As	Cd	Pb	Mn	Hg	Se
Mass Number	75	111	208	55	202	78
Analytical Value ( $\mu\text{g/L}$ )	2.4	0.36	10.2	20.7	1.50	59
Analytical Uncertainty ( $\mu\text{g/L}$ )	0.5	0.02	2.1	4.2	0.30	12
Quantitation Value ( $\mu\text{g/L}$ )	2.2	0.35	8.7	20.2	1.5	68

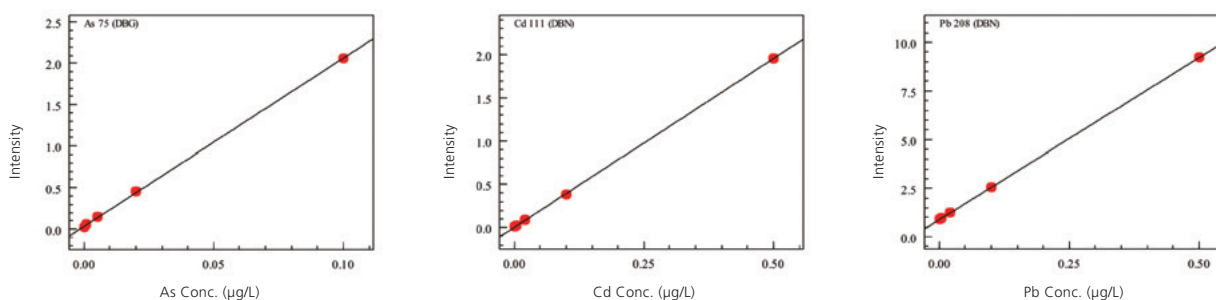


Fig. 1 Calibration Curves for As, Cd and Pb

Note: This analytical system may be used for research applications, and may not be used for clinical diagnosis.



Shimadzu Corporation  
www.shimadzu.com/an/

### For Research Use Only. Not for use in diagnostic procedures.

This publication may contain references to products that are not available in your country. Please contact us to check the availability of these products in your country.

Company names, products/service names and logos used in this publication are trademarks and trade names of Shimadzu Corporation, its subsidiaries or its affiliates, whether or not they are used with trademark symbol "TM" or "®".

Third-party trademarks and trade names may be used in this publication to refer to either the entities or their products/services, whether or not they are used with trademark symbol "TM" or "®".

Shimadzu disclaims any proprietary interest in trademarks and trade names other than its own.

The contents of this publication are provided to you "as is" without warranty of any kind, and are subject to change without notice. Shimadzu does not assume any responsibility or liability for any damage, whether direct or indirect, relating to the use of this publication.