

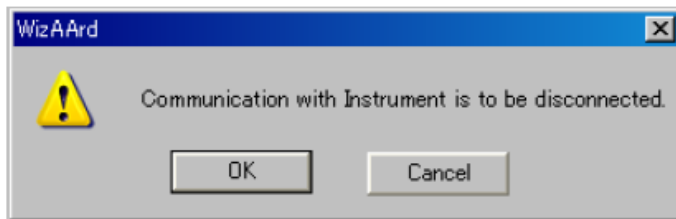
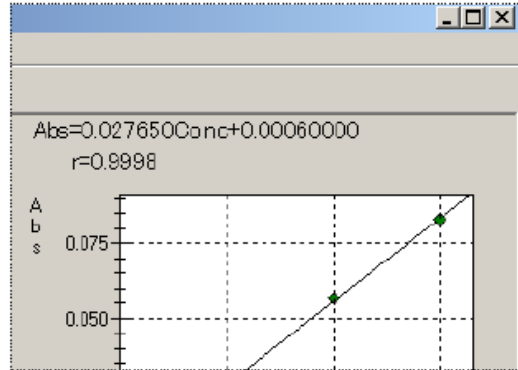
AA – Preparing your instrument for shutdown

- For flame analysis, aspirate DI water through the instrument for 5 minutes to flush it out. For Graphite furnace analysis, do 3-5 injections of DI water to clean out the system.
- If the flame is lit, press the red 'Extinguish' button to turn off the flame.

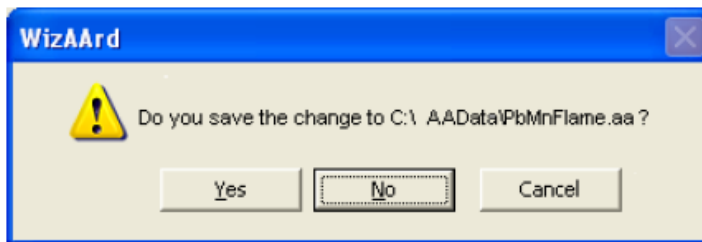


- Exit out of the software.

To terminate the measurement and shutdown the instrument, [Exit] in [File] is clicked or [x] at the upper right of main screen is clicked.



[OK] in the left window is clicked. If the data is not saved, following message window comes up.

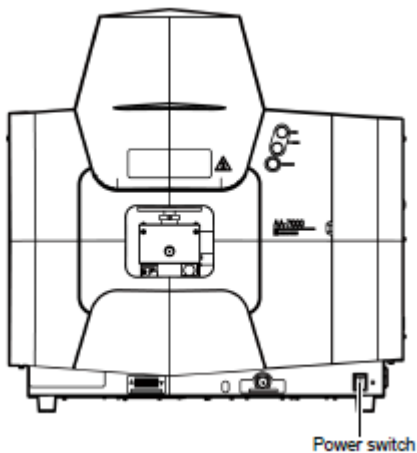


If the change to the file was not saved, the message comes out. Save the file, if necessary.

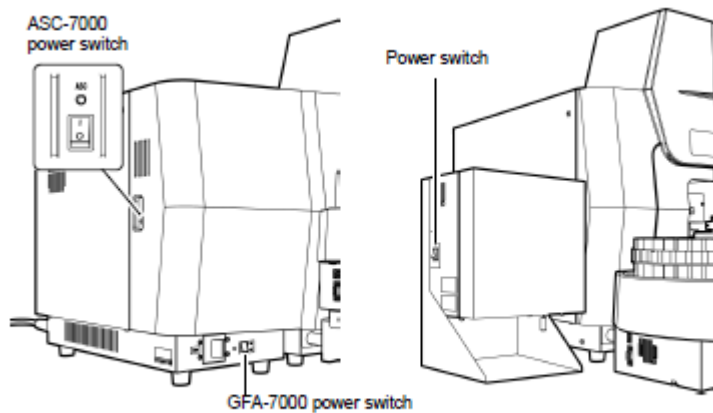
The communication with the instrument is shut off and the software is closed.

- Turn the power off on all applicable instruments.

- Main unit

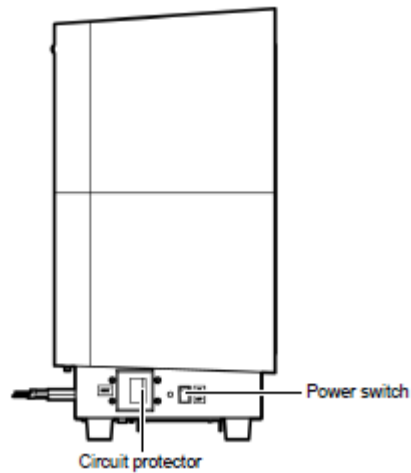


- Auto-sampler



When the controller section of the ASC-7000 is incorporated into the GFA-7000 (left)
When the ASC-7000 is mounted on a stand (right)

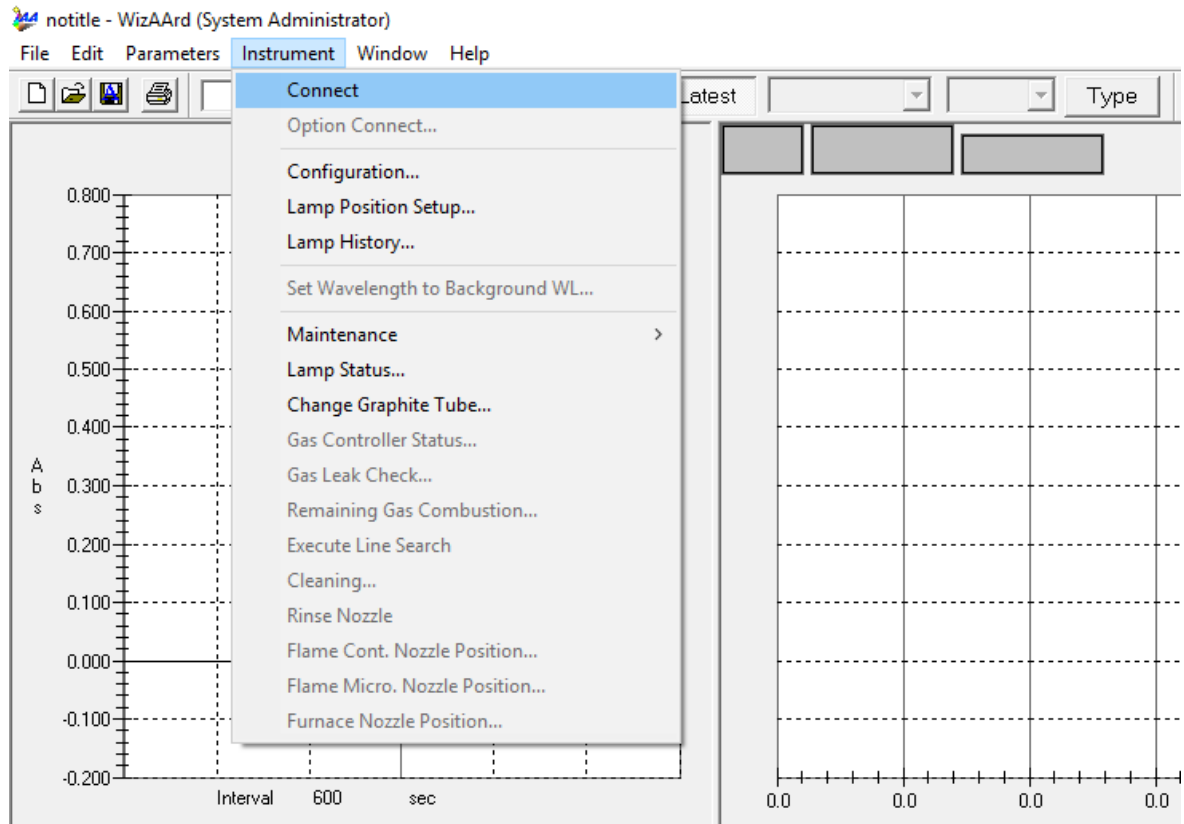
○ Graphite Furnace



- Turn off all gases at the source.
- Turn off chiller or cooling water supply if applicable.
- Additional information can be found in the user manual, PN 206-97176, "Shimadzu Atomic Absorption Spectrophotometer, AA-7000 Series, Instruction Manual".

AA – Preparing your instrument for start-up

- Open all valves on gas cylinders and turn on cooling water circulator if applicable.
- Turn on power to main unit and other applicable accessories.
- Open software and click 'Connect'.



- Go through all the checks and make sure they all pass.

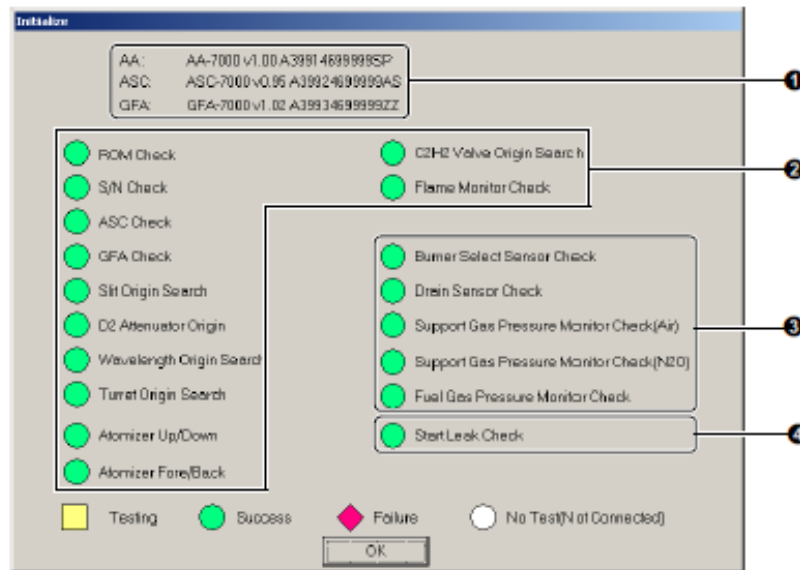


Fig. 3.18 [Initialize] Screen (for AA-7000F)

No.	Name	Function
①	Instrument information	The models of the AA main unit, ASC and GFA, the ROM versions and the machine identification numbers are displayed here. If neither ASC nor GFA is connected, the ASC and GFA information is not displayed.
②	Automatic inspection points	These are inspections that the instrument performs automatically. If neither ASC nor GFA is connected, [Not Connected] (○) is shown for the [ASC Check] and [GFA Check] points.
③	Manual inspection points	Messages are displayed to prompt the successive performance of each of these inspection points. Carry out the inspections in accordance with the messages.
④	Start Leak Check	Starts an 8-minute automatic gas leakage inspection.

- Proceed with usual analysis.