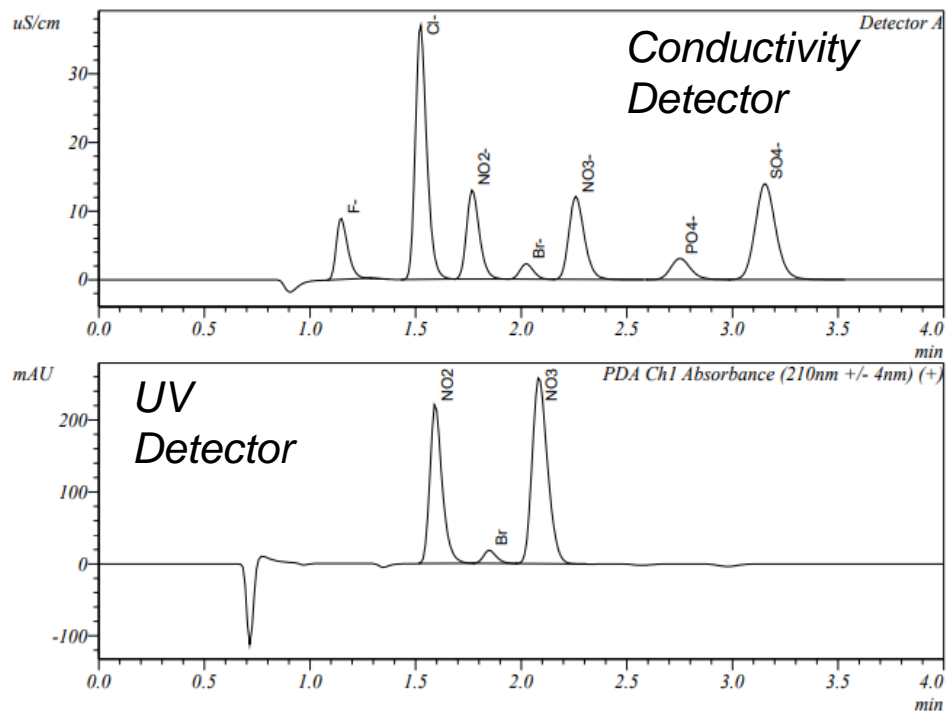


# Fast EPA 300 Analysis on Shimadzu Prominence IC

Improve sensitivity & minimize sample re-runs



- ✓ Improved sensitivity for nitrate and nitrite by 1 order of magnitude with UV detector

Parameter	Conditions
Flow rate	2 ml/min
Column Temp	50 °C
Injection Volume	20 µl
Eluent	5.5 mM Na <sub>2</sub> CO <sub>2</sub> /1.5 mM NaHCO <sub>3</sub>
Column	AS22 Fast 4x150mm Column
UV Detector	50 °C, 210 nm
Conductivity Detector	53 °C, Anion Suppressor

Anions	CONDUCTIVITY Calibration range (ppm)	UV DETECTOR Calibration range (ppm)
Fluoride (F-)	0.01-50	
Chloride (Cl-)	0.05-250	
Nitrite (NO <sub>2</sub> -)	0.01-50	0.001-20
Bromide (Br-)	0.01-50	
Nitrate (NO <sub>3</sub> -)	0.01-50	0.001-20
Phosphate (PO <sub>4</sub> -)	0.01-50	
Sulfate (SO <sub>4</sub> -)	0.05-250	

