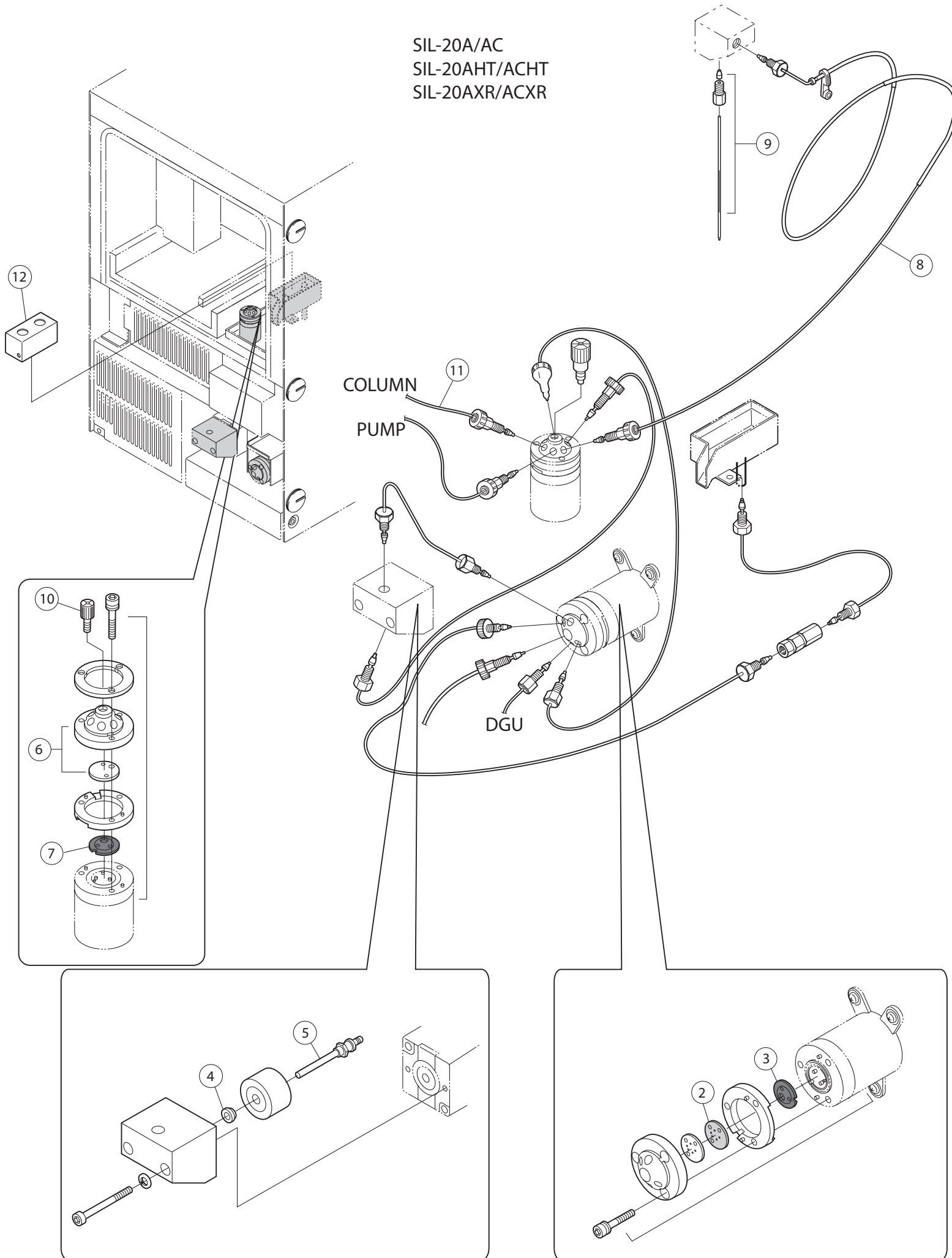


SIL-20A/AC
 SIL-20AHT/ACHT
 SIL-20AXR/ACXR



1	Suction Filter Assembly (not shown)	228-45708-91
	Suction Filter (no tubing) (not shown)	228-45707-91
2	LPV Stator	228-36917-01
3	LPV Rotor	228-36923-00
4	Metering Pump Seal	228-35145-00
5	Metering Pump Plunger Assembly	228-35010-91
6	HPV Stator Assembly (20A/C)	228-45408-91
	HPV Stator Assembly (20A/C HT)	228-45408-93
	HPV Stator Assembly (20 A/C XR)	228-48858-91
7	HPV Rotor (20 A/C, A/C HT)	228-41310-92
	HPV Rotor (20 A/C XR)	228-48854-00
8	100 uL Sample Loop (20 A/C, A/C HT)	228-45402-95
	50 uL Sample Loop (20 A/C XR)	228-45402-96
9	Needle	228-41024-93
10	Needle Seal (20A/C, A/C HT)	228-42325-01
	Needle Seal (20A/C XR)	228-50390-00
11	PEEK Outlet Tubing 0.13 x 600 mm (20A/AC)	228-40984-94
	Micro Outlet Tubing 0.1 x 600 mm (20A/C HT)	228-48464-92
	Micro Outlet Tubing SUS 0.1 x 600 mm (20A/C XR)	228-48826-92
12	Rinse Port Cover	228-48328-00
	Rinse Port Cap w/o Holes	228-48331-91
	Rinse Port Cap w/ Holes	228-48331-92