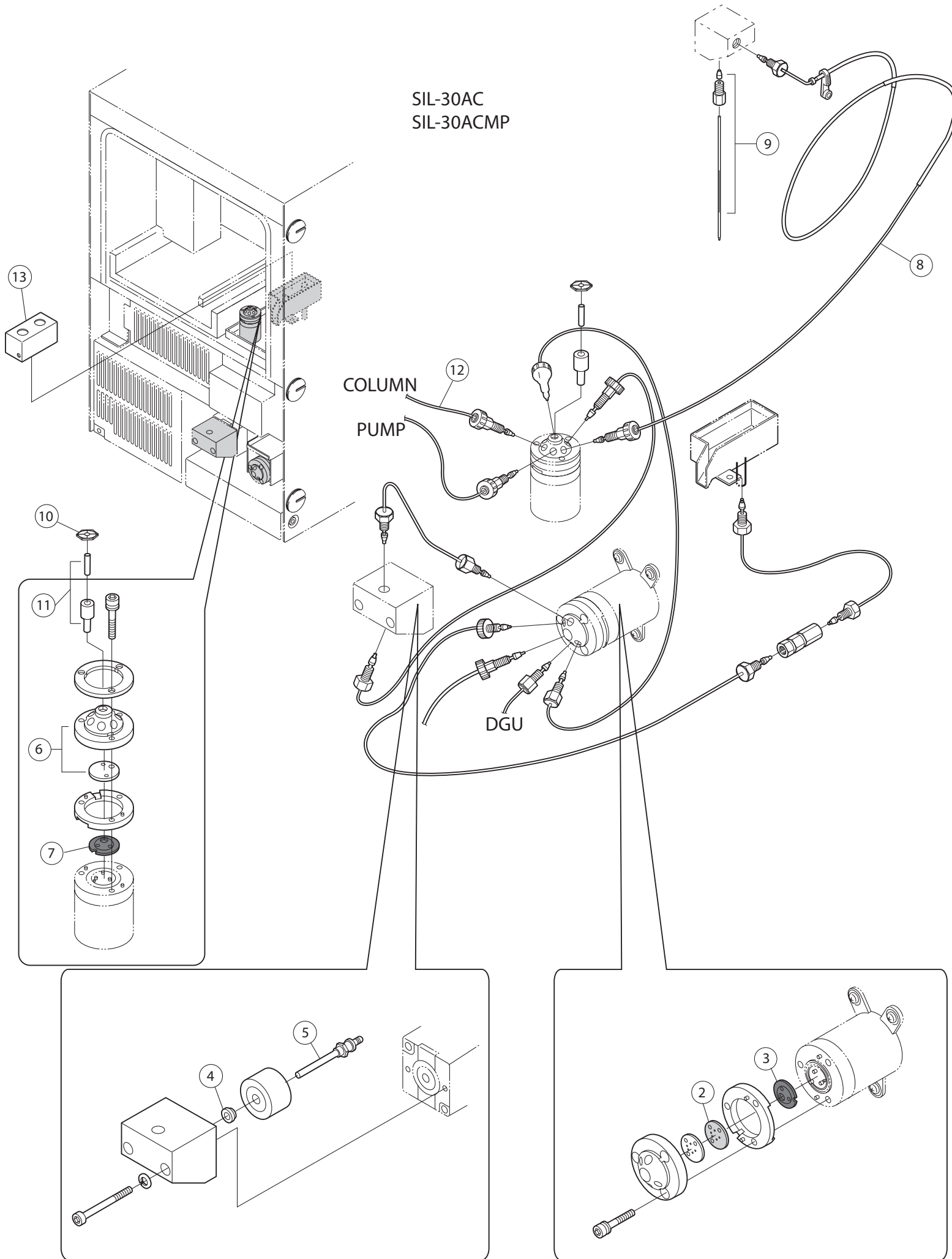


SIL-30AC
SIL-30ACMP



1	Suction Filter Assembly (not shown)	228-45708-91
	Suction Filter (no tubing) (not shown)	228-45707-91
2	LPV Stator	228-51663-01
3	LPV Rotor	228-51922-00
4	Metering Pump Seal	228-35145-00
5	Metering Pump Plunger Assembly	228-35010-91
6	HPV Stator Assembly	228-48858-95
7	HPV Rotor	228-52139-00
8	50 uL Sample Loop (30A/AC only)	228-45402-96
	50 uL Sample Loop (30ACMP only)	228-45402-98
9	Needle	228-41024-95
10	Needle Seal Cap	228-51904-00
11	Needle Seal	228-52253-00
	Needle Seal Kit (3 Seals + 1 Housing)	228-52401-92
12	Outlet Tubing with Preheater (CTO-30A)	228-52597-41
	SUS Outlet Tubing, 0.1 x 600 mm (CTO-20A/AC)	228-53184-91
13	Rinse Port Cover	228-48328-01
	Rinse Port Cap w/o Holes	228-48331-91
	Rinse Port Cap w/ Holes	228-48331-92